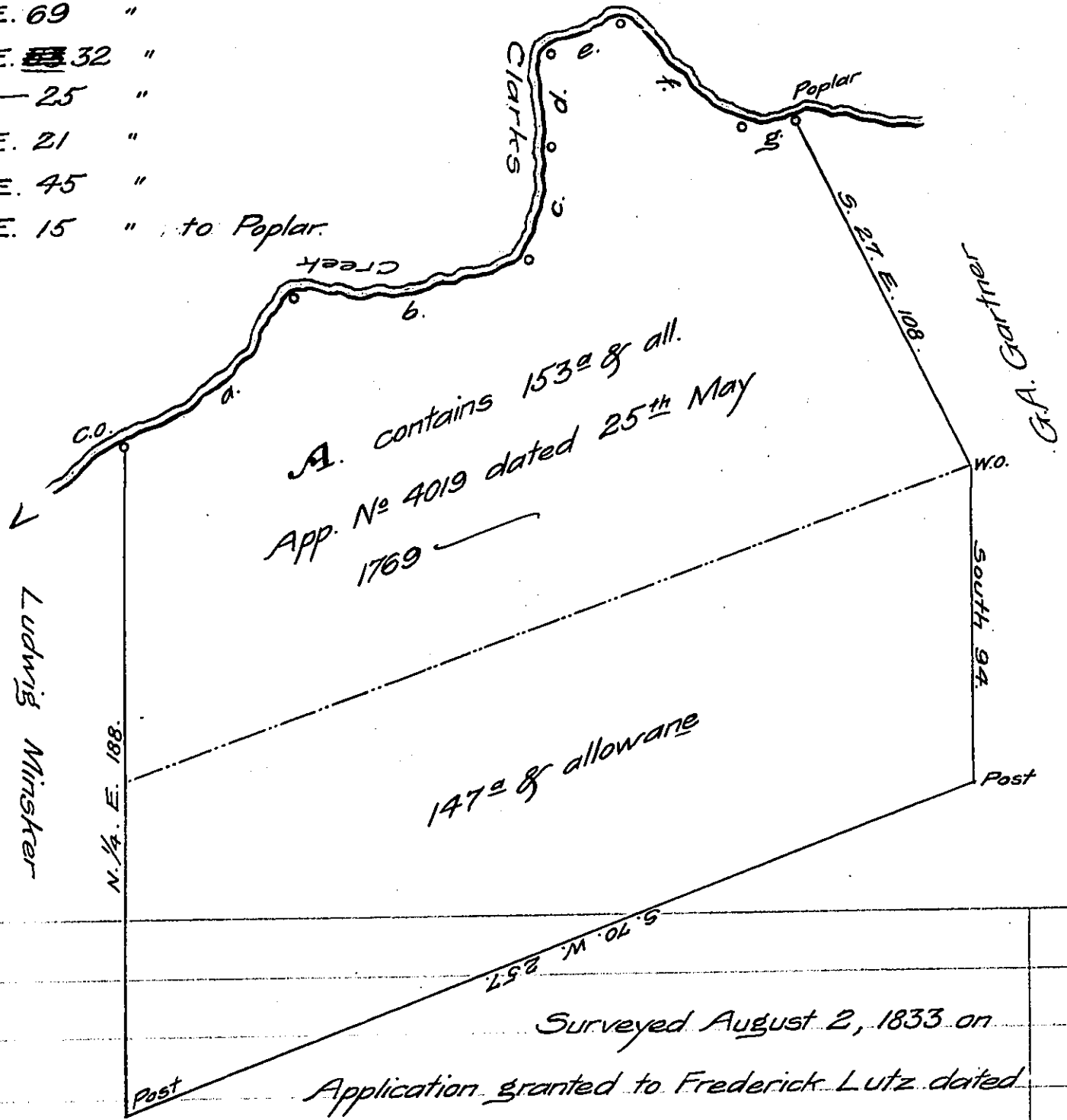


FORM NO 1.

Courses & distances up Clarks Creek
Beginning at a Chesnut Oak

- a. N. 49. E. 64 perches
- b. N. 81. E. 69 "
- c. N. 12. E. ~~53~~ 32 "
- d. North — 25 "
- e. N. 67. E. 21 "
- f. S. 50. E. 45 "
- g. N. 85. E. 15 " to Poplar.



Surveyed August 2, 1833 on
 Application granted to Frederick Lutz dated
 15 June 1767 No 2705 Situate in Middle Paxton township Dauphin County
 Containing three hundred acres and allowance
 To Jacob Spangler Esq. }
 Surveyor Genl. } John Davies Contractor

Note. That part of the above Survey marked A contains 153 1/2 8/ allowance Surveyed to Jacob Shafner by his Application No 4019. dated 25 May 1769 part of which is Patented and occupied by John Boal. — The remainder is held by improvement made by James Leonard prior to the year 1795.

IN TESTIMONY that the above is a copy of the original remaining on file in the Department of Internal Affairs of Pennsylvania, made conformably to an Act of Assembly approved the 16th day of February, 1833, I have hereunto set my Hand and caused the Seal of said Department to be affixed at Harrisburg, this fourteenth day of July 1908.

Henry Horck
 Secretary of Internal Affairs.